



## 2015 Annual Report

PIERCE CONSERVATION DISTRICT

Working to conserve natural  
resources that are essential to  
both our economy and our  
region's quality of life.

CONSERVATION ACROSS PIERCE COUNTY



# What We Do

## & OUR FOUR MAIN PROGRAMS

Pierce Conservation District works with local landowners and public agencies to conserve natural resources that are essential to both our economy and our region's quality of life. Our collaborative efforts with citizen volunteers to create a just food system, improve water quality, promote sustainable agriculture, and recover wildlife habitat, is the heart of our mission.

Our district's roots run deep in our community. Created in 1949 as part of a national response to the ecological disaster of the 1930s known as the Dust Bowl, we have worked for over 65-years to help local farmers, cities, and citizens address numerous sustainability challenges. Conserving our natural resources for future generations gets more difficult with each year, making the work of Pierce Conservation District more important than ever.

To learn more about the District's efforts to improve the natural resources of Pierce County, explore our 2016–2020 Strategic Plan. You can download the plan at our website, [www.PierceCD.org/353/Strategic-Plan](http://www.PierceCD.org/353/Strategic-Plan). ■

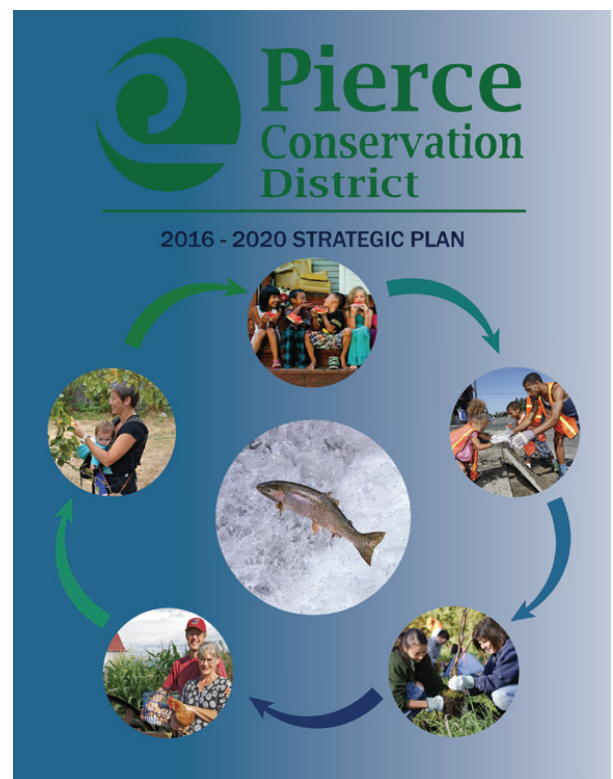


## Did YOU know?

In 2015, the Pierce Conservation District engaged a total **1,410 volunteers** who served for **8,829 hours**.

## Contents

- p. 2-3 | **What We Do**
- p. 4 | **Executive Director and Board Chair Message**
- p. 5 | **Recognition of Partners**
- p. 6-7 | **2015 By the Numbers**
- p. 8-9 | **Green Partnership Fund**
- p. 10-11 | **Farm Planning & Agricultural Assistance**
- p. 12-13 | **Water Quality Improvement & Monitoring**
- p. 14-15 | **Urban Agriculture & Local Food Access**
- p. 16-18 | **Habitat Improvement & Environmental Education**
- p. 19 | **Financial Report**



"The Pierce Conservation District is a helpful resource for those interested in conservation efforts in our county. I appreciate the work the District does to **engage the community** in that process. For those of us who rely so deeply on the land and want to **see it remain viable for generations to come**, it's good to have partners like the Pierce Conservation District."

– Rep. J.T. Wilcox  
R-YELM



## Urban Agriculture & LOCAL FOOD ACCESS

Through our Harvest Pierce County program, the district creates a community of abundance through gardening, glean-ing, and educating Pierce County about their food and food systems. Our Veggie Co-Op, Gleaning Project, and Commu-nity Gardens produce bountiful harvests of locally grown food for volunteers and local food banks alike. Besides growing crops for their own tables, participants gain a greater sense of community and connect with their local food system.



## Habitat Improvement & ENVIRONMENTAL EDUCATION

Our work focuses on improving riparian habitat through the removal of invasive weeds and replanting with native trees and shrubs. Streamside planting events engage hundreds of volunteers in efforts that help in the recovery of endangered salmon and other wildlife.

District Environmental Education programs include classroom presentations, organizing Family Fun events, workshops, and field trips for K-16 students. These efforts reached thousands of young people and the community at-large throughout Pierce County with a message of how important environmental steward-ship is and provided an opportunity to act on that message.



## Farm Planning & AGRICULTURAL ASSISTANCE

The district provides local farmers with financial and techni-cal assistance that allows them to voluntarily improve their farm practices. This support makes farms more economically sustainable while helping reduce negative impacts on soil and water resources. The “Best Management Practices” that we help farmers employ serve to control soil erosion and water runoff, which can contaminate streams and the marine envi-ronment of Puget Sound. Additionally, the district’s support through programs such as our mobile meat unit and poultry processing unit create a shared infrastructure, which reduces production costs and increases access to local markets.



## Water Quality IMPROVEMENT & MONITORING

The district works with citizen volunteers to monitor the health of our streams and rivers in order to educate the public about how our daily lives impact our local water. The data collected through our Water Monitoring Program helps promote low-impact development practices, informs public agencies of problem areas, and inspires citizen action to improve our water quality. The district engages citizens in action initia-tives through our rain garden, Depave, and streamside planting programs. These programs directly improve the water quality of our region by filtering out pollutants and reducing stormwa-ter runoff. Collectively, the efforts create an informed public and help local communities meet Clean Water Act standards.

# Letter from

## EXECUTIVE DIRECTOR & BOARD CHAIR

2015 was another stellar year for the District. You will see many examples of the ongoing work and commitment to the land, water and people of Pierce County in this report. You will also see examples of new, invigorating partnerships and projects tackled to advance our mission.

Significant milestones were reached by the District in 2015 including adopting an ambitious, yet clear strategic plan that will guide the work of the District for the next 5 years. You can find a copy of the plan on our website at [www.PierceCD.org/353/Strategic-Plan](http://www.PierceCD.org/353/Strategic-Plan). Your comments and feedback on the plan are most encouraged, as we remain adaptive in our approach. More importantly, we need your commitment as volunteers and partners to help us implement the plan and reach our goals.

Through the reflective process of developing the plan for the next 5 years, our sense of the challenges facing this community and our unique role in addressing them. Our deep community engagement philosophy is a unique driving force in our work and we rely on the special connection we and our partners feel for our local environment.

Our programs will continue to evolve over the coming years to continue to tackle the most pressing challenges facing our rural economy, water quality, food access and habitat loss. The thing that grounds us in the work we do are the people we serve, our strong partnerships to accomplish this work, and this very special place that we are all working to sustain.

As you review the District's 2015 Annual Report, take note of the fantastic partnerships developed to accomplish impactful projects. Take note of the people the District empowers and the deep commitment to community engagement in all that we do. Also, take note in our unrelenting commitment to sustaining our rural economy, protecting our soil and water resources and improving food access and habitat function for the people, fish and wildlife of this very special place.

We continue to thank you for your partnership and support in the work we do, and we look forward to working with you to achieve the inspiring goals we have set for ourselves beginning in 2016 and beyond.

Sincerely,



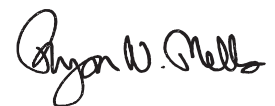
**Jeanette Dorn**  
BOARD CHAIR



*Ryan Mello, Executive Director*



*Jeanette Dorn, Board Chair*



**Ryan N. Mello**  
EXECUTIVE DIRECTOR

"The Russell Family Foundation invests in community-based organizations that are essential to recovering Puget Sound. Through the Foundation's Puyallup Watershed Initiative, we are pleased to support the important work the Conservation District does in partnership with so many others to **engage the community, implement innovative and cooperative conservation projects**, and tackle our region's most pressing natural resource problems."

- **Richard Woo**  
CEO | THE RUSSELL FAMILY FOUNDATION



# Partners

## ORGANIZATIONS & COMMUNITIES WE WORKED WITH IN 2015

### PARTNER JURISDICTIONS:

Pierce County  
City of Bonney Lake  
City of Buckley  
City of Dupont  
City of Fircrest  
City of Gig Harbor  
City of Lakewood  
City of Milton  
City of Orting  
City of Puyallup  
Town of Steilacoom  
City of Sumner  
City of Tacoma  
City of University Place

### FUNDING PARTNERS:

Army Corps of Engineers  
Army National Guard  
– Camp Murray  
Bonneville  
Environmental Foundation  
Greater Tacoma  
Community Foundation  
King Conservation District  
Lakewood Water District  
Metro Parks Tacoma  
National Fish and  
Wildlife Foundation  
PCC Farmland Trust  
Peninsula Light

Pierce County Parks & Recreation  
Puget Sound Partnership  
Puyallup Tribe of Indians  
River Network  
South Puget Sound Salmon  
Enhancement Group  
Tacoma/Pierce County  
Health Department  
The Russell Family Foundation  
Toyota Together Green  
US Department of Agriculture  
Washington Department  
of Fish & Wildlife  
Washington State  
Conservation Commission  
Washington State  
Department of Ecology  
Washington State  
Department of Health  
Washington State Department  
of Natural Resources  
Washington State Recreation  
and Conservation Office

### EVENT SPONSORS:

Coordinated Care  
Multicare Health System  
Puget Sound Energy  
Tehalah  
Whole Foods

### IN-KIND SUPPORTERS:

TAGRO  
City of Tacoma  
Environmental Services  
19 C Lions Club  
Boy Scouts  
Girl Scouts  
Clover Park Technical College  
First United Methodist Church  
Master Gardeners  
Cascade Compost

### KEY PROJECT PARTNERS:

Pierce County Surface  
Water Management  
Forterra  
Green Puyallup Partnership



### BOARD OF SUPERVISORS

Jeanette Dorner | *Chair*  
Scott Gruber | *Vice-Chair*  
Ernie Bay | *Member*  
David Seago | *Auditor*  
Sheila Wynn | *Member*



# Did YOU know?

We have been working  
with local landowners  
on conservation  
issues **since 1949.**

# By the Numbers

SOME OF OUR ACCOMPLISHMENTS FROM 2015

**13,936**  
trees and shrubs planted



**38,282 sq.ft.**  
of heavy use areas installed



by 22 landowners to *contain their livestock* when they should not be out on pasture (winter/droughty times)

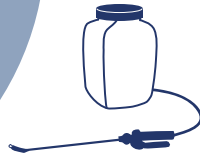


**925** storm drains marked  
*"Only Rain Down the Drain"*

**1,410**  
volunteers across all programs worked a total of **8,829 hours** for a value of **\$132,435**



**24 mi.**  
of knotweed treatment in Nisqually Watershed and South Prairie Creek



**331 ac.**  
knotweed treated  
11.85 acres re-planted with **4,662 plants**



**7,000 sqft.** = **168,00 gal.**  
of pavement removed of stormwater runoff infiltrated



**70,279 lbs.**



food donated to local foodbanks

**44,619 lbs**  
food from *gleaning*  
+  
**25,660 lbs.**  
food from *community gardens*

**4** hay probe loans



**489**

attendees at our *farm workshops*

67% increase over last year!



**26,840**  
native  
plants sold

# of pre-order  
plant sale  
customers: **403**

**25** volunteers  
working **305.5 hours**



**39**  
streams  
monitored  
at 60 sites



**96** volunteers spent  
**755 hours** monitoring  
streams over the  
course of **289 trips**

**6,675 ft.**  **cross fencing**  
installed  
by **17 landowners** to facilitate *rotational grazing*

**1,060**  
people engaged  
through **31**  
Habitat/Environmental  
Education **workshops**  
& presentations



**29**  
Water Quality  
Workshops

**572**  
K-12 youth  
taught directly  
about conservation



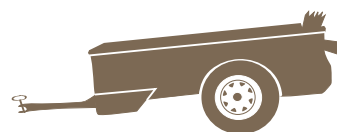
**860**  
5th graders attended  
the Children's  
Water Festival

**76**  
**community**  
**gardens**  
in Pierce County  
in 2015



**3,538 ft.**  **stream exclusion**  
**fencing** installed  
by **5 landowners** to exclude livestock from streams or wetlands

**11** new manure  
storage structures  
 built to  
contain  
and **compost**  
manure



**6** manure  
spreader  
rentals

**16** roof **runoff water**  
**systems** (gutters)  
installed

**2** farm **plans**  
completed

**130** farm technical  
assist / **site visits**

**22** farm workshops  
and tours

**43** soil  
samples

**34.5** acres of **pasture**  
**renovated**

**22** **BMPs** installed

**24** landowners  
practicing  
**rotational**  
**grazing**

**96** harvests with  
the **Gleaning**  
**Project**

**6** cost share  
projects

**4** Veggie Co-op  
food preservation  
workshops

**1432** K-12 youth  
reached

# Green

## PARTNERSHIP FUND

---

Pierce Conservation District's Green Partnership Fund is a small grant program offered to partner jurisdictions, non-profits, and community groups to further our natural resource conservation mission. Begun in 2004, the district has invested over \$1.5M into small community projects, creating a large environmental impact.

In 2015, the district invested \$88,625 in 9 projects through the Green Partnership Fund.

### Sherman Elementary Gets New Rain Garden Through Green Partnership Fund

With funding support and technical assistance from the District, Sherman Elementary School has added one more rain garden to Tacoma and has a powerful new tool to teach children about our relationship with the environment.

Stephanie Brock, the parent of a 1st grade student at Sherman Elementary, saw the blackberry infested patch of ground next to the kids' play equipment as an opportunity, not an eye sore.

*"I approached Mr. Stanley about the grant and rain garden last fall because I saw the opportunity to work with the school on a stormwater project that could teach the students and community about all aspects of stormwater, which is the biggest impact on salmon in the Puget Sound," Brock said. So after students completed an infiltration test last spring, confirming that the soils are appropriate for a rain garden, the District supported the rain garden by awarding a Green Partnership Fund grant for the work and staff assisted the school in the design and installation of the rain garden.*

*"I enjoyed watching the students take ownership of the process from planning the layout of the pond to planting," added Brock. "They learned about calculating soil infiltration rates, what plants would thrive in their garden and why, and why disconnecting the roof downspout was important. Seeing their sense of pride that part of the stormwater from their school roof is no longer going directly to the Sound, but is helping their garden grow is inspiring. I would love to try to put in another garden at the school or at different school in Tacoma."*

This is the third school rain garden that PCD has designed and installed. Rain gardens provide a perfect setting to teach about water quality, habitat creation, and the impact of student actions on protecting our natural resources. ■



---

"Children often learn through planned lessons and through their own experiences that humans impact the environment in negative and harmful ways. I intend to use the rain gardens to demonstrate to the children that through careful planning and thoughtful engineering, humans can also **protect the environment, restore the environment, and live within it more sustainably.**

As the garden matures over the next few years, students will be able to formally and informally make observations about the plants and animals that will use this space. These positive experiences should lead to a **willingness to participate** in maintaining what we have started and to look for other **opportunities to make positive impacts.**"

---

– Ron Stanley  
Teacher | SHERMAN ELEMENTARY





## 2015 Green Partnership Funded Projects

ORGANIZATION NAME	AMOUNT AWARDED	PROJECT DESCRIPTION
City of University Place	\$5,625.00	This funding will support removal and disposal of two bridges across Leach Creek with follow-up restoration planting.
EarthCorps	\$10,000.00	This funding will support removal and treatment of invasive plants along Swan Creek in Tacoma's Swan Creek Park and the adjacent Swan Creek NRDA site by EarthCorps crews.
Forterra	\$10,000.00	Funding from GPF will provide matching funds for the stewardship and restoration of the Buckley Forest Preserve, a 206-acre forest owned by Pierce Co jointly stewarded via a public-private partnership with Forterra.
Forterra NW	\$10,000.00	This funding will help transform the Dead Man's Pond property for increased education, engagement, and community stewardship opportunities.
Harbor WildWatch	\$10,000.00	This funding will support PHASE 2 of outreach, education, and action projects that cause citizens to take direct action to protect habitat, water quality and salmon in the newly restored Donkey Creek and Austin Estuary.
Hilltop Urban Gardens	\$10,000.00	This funding will support the development of a small scale urban farming system that models protection, enhancement, and creative development of our urban lands in Pierce County.
Nisqually Land Trust	\$10,000.00	This funding will support costs for project materials and staff time related to volunteer activities focused on enhancing fish and wildlife habitat on Land Trust properties in the Nisqually River Watershed.
Northwest EcoBuilding Guild, South Sound Chapter	\$1,000.00	This funding will support two Vision2Action public symposia to facilitate knowledge of and dialog about public compliance issues for the National Pollutant Discharge Elimination System (NPDES).
Sherman Elementary School Group	\$7,000.00	This funding will support the design and installation of a rain garden at Sherman Elementary for water quality protection and education and community outreach.
St. Leo Food Connection	\$5,000.00	This funding will support Pierce County families by creating wider and more equal access to healthy, locally grown food through education programs, access to equipment, and increased self-reliance.
Sustainable Roots of the Northwest Leadership Foundation	\$10,000.00	This funding will support youth and school gardening on Tacoma's East Side and a free seven week Summer gardening program for 15 -20 students ( 4th to 11th grade).

**TOTAL AWARDED: \$88,625.00**



# Farm Planning & AGRICULTURAL ASSISTANCE

A key element to implementing our mission of natural resource protection has long been workshops and tours to educate livestock owners on farming practices that both protect water quality and increase productivity on their farms. In recent years, we have expanded our offerings and the partners we work with to plan and produce the workshops to include educational events designed to help landowners improve their economic viability as well. Because if commercial farms cannot stay viable, then often times this land will be converted to other non-farm uses, losing open space and all the valuable elements that go along with it: water percolation and storage, wildlife habitat, and of course, production of healthy, fresh food.



*Scott Gruber, Vice Chairman of the District's Board of Supervisors, leads a workshop at his farm about raising and processing rabbits for meat.*

In this vein, in 2015 along with our usual offerings related to mud, manure, and pasture management, we held classes on poultry processing, agritourism in partnership with the Puyallup Watershed Initiative's Agriculture Community of Interest, farm economics, food hubs in partnership with the Pierce County Farm Forum workshop series, pastured poultry, and farming in a changing climate to name a few. In this process, we have found that when landowners come out to something such as a how-to poultry processing class, they also learn about the district's other services often have us out to their farms to discuss water quality protection and farm best management practices, and the circle is then complete. ■



*Puyallup Valley farmer, Keith Chadd, helps wrangle a loose goat at Wild Hare Organic Farm.*

In addition to our workshops, District staff conducted **130 site visits** to provide Technical Assistance to local landowners, including: **2 Farm Plans**, **43 Soil Samples**, and **22 Best Management Practices** installations.





# Did YOU know?

Pierce Conservation  
District hosted

**22 Workshops/Farm Tours**  
with total 489 attendees  
(a 67% increase  
over last year!)



# Water Quality

## IMPROVEMENT & MONITORING

### Depave Cleans Our Water While Beautifying Our Neighborhoods

After hearing about Depave through a PCD workshop the McKinley Business District jumped at the opportunity to improve their impact on water quality and improve the beauty of their 2½ block district. The previous landscape was paved and grey, and the plum trees were dying. Over two community events, grant funds from Toyota Together Green, The Russell Family Foundation and City of Tacoma Make a Splash, and donated services from local contractors and City of Tacoma, 7,000 sqft of pavement was removed and replanted with 2,800 shrubs and 30 trees. This improvement will **infiltrate 168,000 gallons of runoff** annually that otherwise would contribute to the water quality impairment of Puget Sound.

### Green Puyallup Joins Green Cities Program

The Green Puyallup Partnership (GPP) is the most recent addition to the Green City Partnerships family. Formed in 2015, the Green Puyallup Partnership is a public-private venture between the City of Puyallup, Pierce Conservation District, Forterra, other nonprofits, businesses, and community members. The Green Puyallup Part-



*One of the District's National Civilian Community Corps (NCCC) crews after finished a native plant restoration project.*

nership's vision is to restore and maintain natural open spaces that support healthy ecosystems and waterways through community stewardship.

### NCCC

The National Civilian Community Corps (NCCC) is a full-time, team-based residential service program that is organized into teams to serve in local communities in all 50 states. NCCC teams complete four different 6-8 week long projects in different locations across the country during their 10-month term of service.

In 2015, Pierce Conservation District was our first ever NCCC team. During their time with us they worked to:

- Remove **1,000 pounds of invasive vegetation** along streamsidess and in community gardens
- Tended to **50 urban trees**
- Improved **15 acres** of riparian habitat
- Installed **1,255 native trees and shrubs**
- Assisted **11 community gardens** with winter clean-up
- Staffed our **Annual Native Plant Sale**



*50 volunteers helped remove 7,000 square feet of pavement from the McKinley Business District in Tacoma and later helped plant over 2,500 trees and shrubs to create new greenspace.*





## Did YOU know?

Across all programs in 2015, the District **planted 13,936 trees and shrubs** throughout Pierce County to improve both Water Quality and essential Habitat!



### Improving Meeker Creek's Water Quality and Salmon Habitat

Over the summer of 2015, the City of Puyallup was hard at work on the construction of the Meeker Creek Riparian and Stream Restoration Project. The project, located along Meeker Creek, just prior to its confluence with Clarks Creek, removed 1,000 linear feet of the 4,385-foot Meeker Creek from its former trapezoidal ditch and place it in a natural, meandering stream channel. This project also restored over 100,000 square feet of riparian area while also creating floodplain

storage. Over the fall of 2015 Pierce Conservation District hosted 4 plantings where hundreds of neighbors, community members, and volunteers worked to plant thousands of trees and shrubs. The restoration project and riparian planting will contribute to an increase in DO levels in the creek, reduce in-stream temperature through riparian cover, and restore salmon spawning and refuge habitat. We have already seen chum salmon spawning in this new section of creek! ■



# Urban Agriculture & LOCAL FOOD ACCESS



## Harvest Pierce County

Harvest Pierce County celebrates its 6th year connecting the Pierce County community to each other through food and land. With over 76 community gardens in the county, over a hundred fruit tree and farm gleans, and dozens of classes and events through the county, there are more opportunities than ever to grow, share, and learn about growing and harvesting your own food. We are also pleased to announce new educational opportunities to support garden leaders to strengthen the skills required for effective community building. These classes are in large part thanks to the Pierce County Center for Dialog and Resolution.

2016 is a year Harvest Pierce County works harder than ever to support the equal access of programming to everyone in Pierce County. Harvest Pierce County is an active participant in the Just and Healthy Food System Community of Interest that works to eliminate barriers to healthy food by taking lead from communities who experience these barriers first hand.

## Veggie Co-op:

The Veggie Co-Op is designed to give community members an opportunity to experience a whole season growing food on a large scale. While learning sustainable agriculture techniques, volunteers grow produce for local food banks, school district cafeterias, and their families. In 2015, 48 people signed up to support the project and over 8,000 pounds of fruits and vegetables were grown and dispersed to participants, Franklin Pierce School District, and the emergency food system. In addition, volunteers were able to preserve some of the food produced at the Co-op by organizing canning workshops in partnership with the Center for Food Preservation Arts. In the fall of 2015, a planning team was formed to help design the farm plan for the next growing season.

*"The reason I support and participate in the veggie Co-op is due to the fact that very few people today have access to locally grown, organic fruits and vegetables. Our society as a whole has lost its connection with the land, and their personal ability to grow a large portion of the food they eat. So participating in this Co-Op allows me to connect with the land myself, learn skills that my generation were never taught, and to help provide organic food to the local food banks."*

- **Amber Ackerson**  
VEGGIE CO-OP VOLUNTEER



Community members discuss gardening techniques, food access challenges, and much more at our 6th Annual Spring Summit.

**"Veggie Co-op has changed the way I interact with my food.** I've loved learning everything from seed to harvest—including discovering my favorite task: broad-forking! I learn something new every week from HPC staff and other Veggie Co-op members, and **I take what I learn back to my community garden plot/community."**

- **Hannah Miner**  
VEGGIE CO-OP VOLUNTEER



# Did YOU know?



- **35% of the food** grown in the US gets wasted
- Harvest Pierce County's gleaning project has harvested and shared over **250,000 pounds** of food with people in need since 2011

## Gleaning Program

The Gleaning Project strengthens community members' connection to the environment and to each other as we work together to bring the bounty of the land to meet the need of our neighbors.

Gleaners get to experience not only the different edibles that come with each season, but also our county's wide range of food-producing terrain. We've harvested in the wild beauty of an abandoned orchard that's become an agricultural research station. We've made our way through rows of corn planted by a third generation farmer. We've picked hundreds of pounds of pears and persimmons from a yard filled with trees that had been lovingly tended and passed down through generations in one family. We've harvested from commercial farms, homesteads, backyards, parks, and gardens.

The land's abundance exists in stark contrast to the fact that one in five Washingtonians rely on food banks. Food that is trucked from across the country and shipped from around the world is both financially and environmentally expensive, creating a situation where food is plentiful but only within reach of those who can afford it. With the Gleaning Project, volunteers harvest the nutritious bounty all around us, making healthy food that is both carbon neutral and free available to all community members, regardless of their income. ■



# Habitat Improvement & ENVIRONMENTAL EDUCATION

## Partner Spotlight: PCC Farmland Trust

Partnerships. They are a critical component to the District's work, and crucial to getting things done in the world of natural resource protection. Some of the most productive partnerships come from a shared commitment to a goal, clear communication, and trust. Another important ingredient: an ability to pool resources and combine strengths. The District has been fortunate to have found all these qualities in PCC Farmland Trust, with whom we have worked for the past several years on farmland and habitat projects in the greater Orting area.

The District engages with PCC Farmland Trust on several levels, including farmland protection, technical assistance to farmers regarding best management practices, and habitat restoration. In the realm of habitat restoration, we have had the pleasure of working with the Trust to implement seven planting projects on four properties since 2010. These projects have installed over 3400' of stream buffers and 3200' of field hedgerows with 3,369 plants, with even more planned for 2016!

By working together, sharing resources, and playing to each other's strengths, PCC Farmland Trust and the District have hit upon the recipe for successful collaboration on habitat improvement projects, and more!



*Volunteer planting along a tributary to the Carbon River, on a farm conserved with the help of PCC Farmland Trust, 2013. Photo courtesy of Melissa Thompson, [www.mjtphoto.com](http://www.mjtphoto.com).*

## Rain Barrel Popularity Continues!

Even before last summer's long, dry drought, public interest in rain barrels seemed to be on the increase. For several years, the District has had successful partnerships with the cities of Buckley, Gig Harbor, and Orting to sponsor rain barrel workshops in these communities. A grant from the Chambers-Clover Creek Watershed Council allowed the District to offer a rain barrel workshop for residents of DuPont and Steilacoom. And last year also saw the successful launch of a pilot program with Pierce County's Surface Water Management Department to bring stormwater messaging and non-point source pollution education to members of the public via rain water harvesting workshops.

Pierce County's program featured many of the same components as the others, but with a few twists. For example, the county targeted residents of the greater Spanaway Lake watershed in order to bring greater awareness to the impaired water quality of the lake, its tributaries, and outlets. Additionally, the rain barrels were cost-shared at \$25 each for eligible participants, i.e. residents of unincorporated Pierce County. But much like the other workshops, at the end of the day, participants built their own rain barrel with the help of instructor Dan Borba, and were able to take it home, ready to install and catch the next rain drop! ■

## Did YOU know?



In 2015, the District treated **331 acres of Japanese Knotweed**, one of the world's worst **invasive species**!





“ Our partnership with the Pierce Conservation District has been invaluable to our Land Stewardship staff. The expertise that the PCD brings to each habitat restoration project has allowed the Trust to expand our restoration program while feeling confident that each project will have the intended natural resource benefits. PCD has been a generous partner and together we have improved approximately 62% of all on-farm riparian habitat across PCC FT conserved properties in Pierce County. Whether it's assisting with finding volunteers for a blackberry pull or creating complex planting plans for a riparian site, the Trust relies on PCD for guidance and support of the habitat improvement program and is excited to continue to foster this partnership into the future. ”

- *Eve Boyce*  
LAND STEWARDSHIP MANAGER  
PCC FARMLAND TRUST



# Habitat Improvement & ENVIRONMENTAL EDUCATION *(continued)*

## 2015 Children's Water Festival

Fish dissection. Ice cream aquifers. Live stream bugs. These were just a few of the stations that brought the learning to life for 5th graders from around Pierce County during the Tacoma-Pierce County Children's Water Festival last April. It was a day full of fun, hands-on learning for the more than 850 students that were in attendance. The Conservation District took on the coordination of the Festival for the first time, with the help of our many partners and volunteers. The event would not have been possible without the support of more than 150 volunteers who hosted activities, guided classes around the venue, and helped make the day a success. The goal of the Festival is to provide students with a better understanding and appreciation of water as a resource for humans, wildlife, and everything else that makes up our environment.

Generous funding and/or donations were provided by: The Russell Family Foundation, Puyallup Tribe of Indians, Water Cooperative of Pierce County, Chambers-Clover Creek Watershed Council, Lu Winsor Memorial Grant, Papa John's Pizza, Mountain Mist, Starbucks, and Costco.



*5th grade students learn about outdoor activities such as kayaking and much more at the Children's Water Festival.*

*"I want you to know that at the end of the year when students had an opportunity to write about the best day this school year over 25% of my class wrote about the Water Festival. One wrote, 'We played games and learned a lot. Also we got to eat lunch outside even though it rained. I was cold but I had a great time.'"*

**- 5th grade teacher  
DOWER ELEMENTARY**



*Local school children participate in the Salmon Olympics activity to learn the life cycle of Puget Sound salmon as part of our Silver Creek Field Trip day.*

**"This was awesome!!** My kids really enjoyed themselves, and I appreciated how well organized it was! I would love to bring my kids back next year! Thank you!"

**- 5th Grade Teacher  
DELONG ELEMENTARY**



# Financials

## 2015 REVENUES & SPENDING

### REVENUE BY SOURCE

Rates & Charges	\$1,369,352.29	53.6%
Grants	\$1,134,317.00	44.4%
Native Plant & Tree Sale	\$33,112.27	1.3%
Other	\$16,730.71	0.6%
	<b>\$2,553,512.27</b>	

### SPENDING BY PROGRAM

Farm/Ag Assistance	\$619,801.95	24.3%
Water Quality	\$407,841.95	16.0%
Green Partnership Fund	\$105,486.68	4.1%
Legal Services	\$21,259.50	0.8%
Administration	\$287,164.74	11.2%
Communications & Outreach	\$43,329.08	1.7%
Obligated Funds	\$229,025.53	9.0%
Habitat	\$532,636.75	20.9%
Harvest Pierce County	\$306,966.08	12.0%
	<b>\$ 2,553,512.27</b>	

### BALANCE SHEET 12-31-2015

Current Assets	\$1,305,443
Conserved Land & Easements	\$2,056,895
Other Assets	\$1,319

**TOTAL ASSETS** **\$3,363,657**

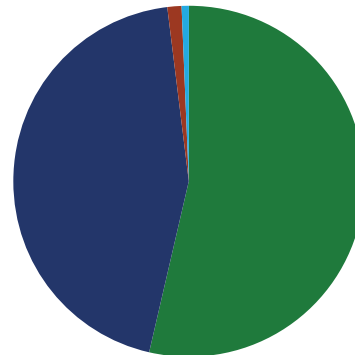
Current Liabilities	\$38,640
Long Term Liabilities	\$65,031

**TOTAL LIABILITIES** **\$103,671**

Equity - Net Assets	\$3,024,351
Equity - Net Income	\$235,635

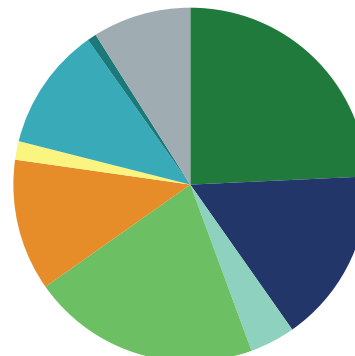
**TOTAL EQUITY** **\$3,259,986**

**TOTAL LIABILITIES AND EQUITY** **\$3,363,657**



Revenues by Source

- 53.6% Rates & Charges
- 44.4% Grants & Contracts
- 1.3% Tree Sale
- 0.6% Other



Spending by Program

- 24.3% Farm/Ag Assistance
- 16.0% Water Quality
- 4.1% Green Partnership Fund
- 0.8% Legal Services
- 11.2% Administration
- 1.7% Communications & Outreach
- 9.0% Obligated Funds
- 20.9% Habitat
- 12.0% Harvest Pierce County



**PIERCE CONSERVATION DISTRICT**

Phone: (253) 845-9770

Fax: (253) 845-4569

Toll Free: (866) 845-9485

**HARVEST PIERCE COUNTY:**

(253) 278-6215

**EMAIL/WEB:**

[info@piercedist.org](mailto:info@piercedist.org)

[www.piercedist.org](http://www.piercedist.org)

[www.facebook.com/PierceConservationDistrict](https://www.facebook.com/PierceConservationDistrict)



Like us on Facebook

**MAIL:**

P.O. Box 1057

Puyallup, WA 98371

**OFFICE LOCATION:**

5430 66th Avenue East

Puyallup, WA 98371