

Local Water Quality Data

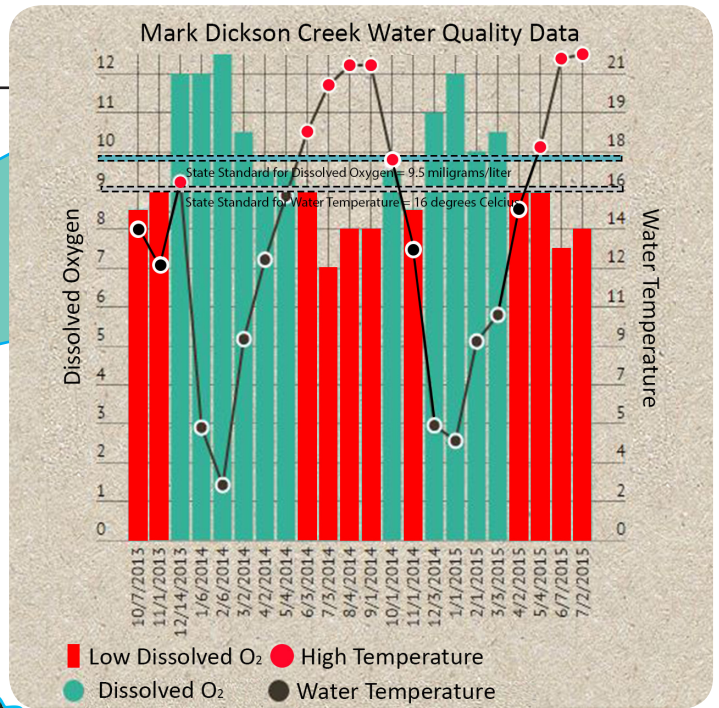
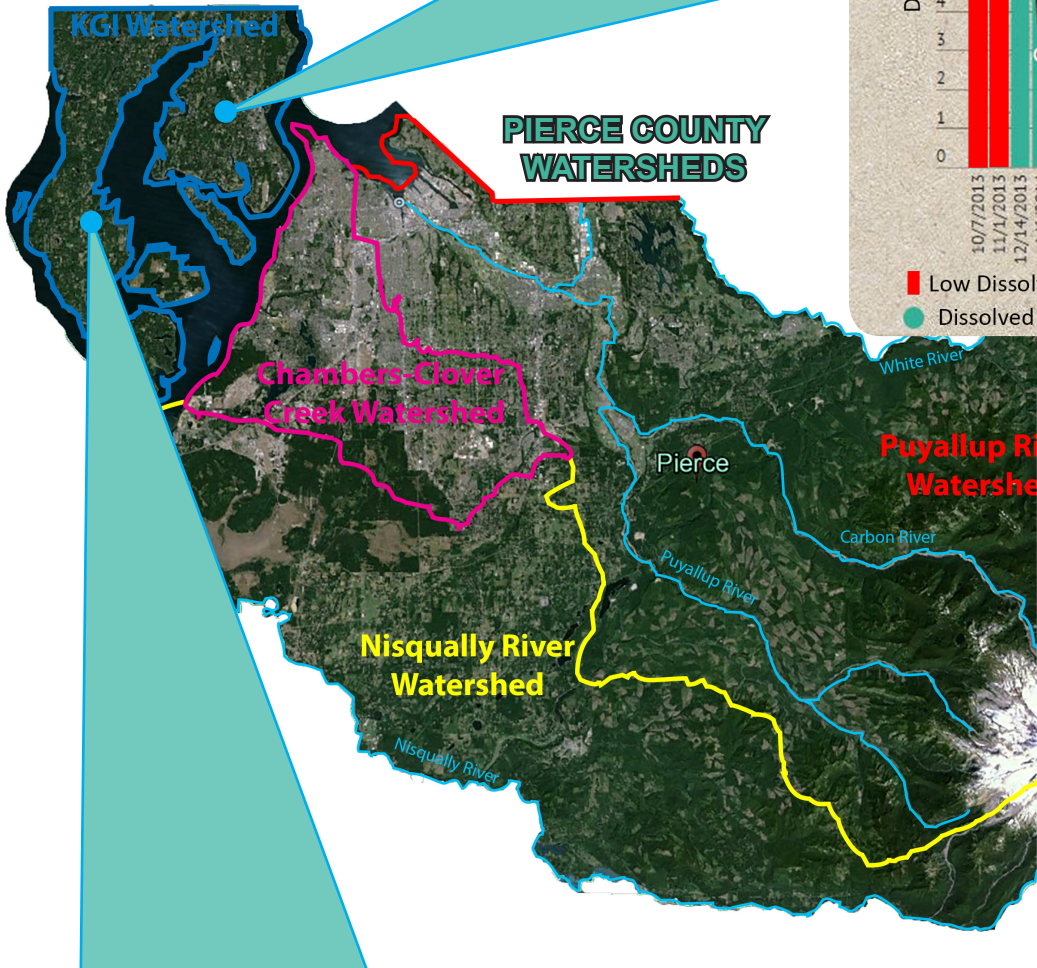
In the Spotlight: Creeks Highlighted this Quarter

Mark Dickson Creek Stream Monitor:

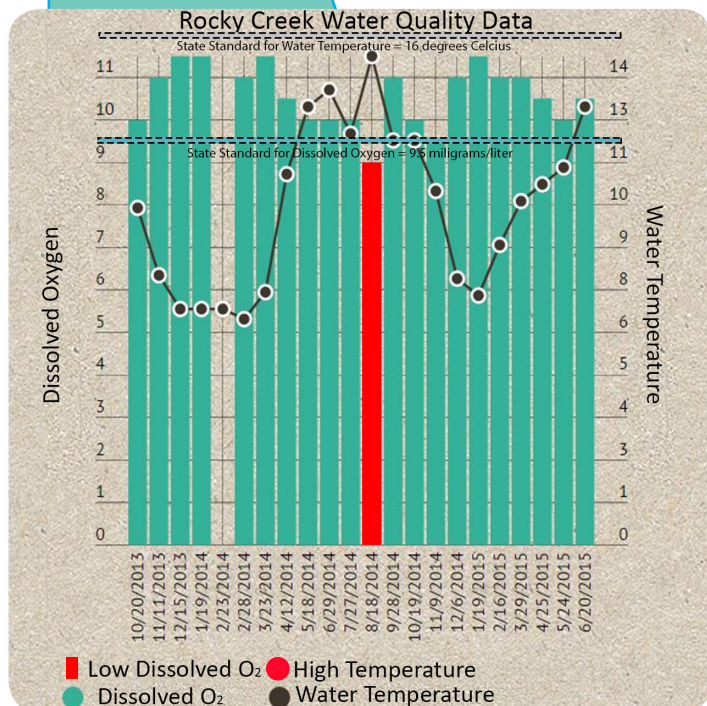
Cyndy Dillon

Rocky Creek Stream Monitor:

Dan Handa



Mark Dickson Creek is a short stream located in the Key Peninsula – Gig Harbor – Islands (KGI) watershed. It flows into Ray Nash Creek which is a salmon bearing stream in its lower reaches. Volunteer collected data for dissolved oxygen (blue) and water temperatures (green) are shown in the graph above. The state water quality standard for both parameters are represented in the graph by the same color dashed lines. Since 2013 there have been several occasions when Mark Dickson Creek has not met the state standard for dissolved oxygen and for water temperature. The low dissolved oxygen and higher water temperatures occurred during summer and early fall when water levels tend to be lower and air temperature higher. Pierce County's Raise the Grade Program will focus on improving water quality problems in Mark Dickson Creek.



Rocky Creek is also located in the KGI watershed and flows approximately 5 miles from Wye Lake in Kitsap County to Rocky Bay in Pierce County. Rocky Creek supports runs of chinook, chum, and coho salmon. Volunteer collected data beginning in fall of 2013 for dissolved oxygen and water temperatures are shown above. The state standard for dissolved oxygen (blue) and water temperature (green) are also represented on the graph above. For this time period (Oct 2013 to June 2015) water temperature is meeting state standards while there was one incidence of low dissolved oxygen during this time.