

Pierce Conservation District - FY2011 Annual Work Plan

District Goals and Objectives:

Assist property owners with the protection of water quality, improvement of fish and wildlife habitat, and natural resource conservation while sustaining our vital agricultural community

Objective: Livestock Program: Assist livestock owners and their communities in preventing environmental degradation resulting from poor land management techniques

Objective: Shellfish Program: Utilize effective partnerships to help protect local shellfish beds from negative impacts resulting from pollution

Objective: Farm/Ag Infrastructure: Retain high-quality soils through provision of technical assistance and market based incentives

Objective: Natural Resource Conservation: Protect and restore native and critical area ecosystems through landowner assistance, education and partnership

Involve and educate our local community through hands-on volunteer activities to improve the quality of streams in Pierce County for the benefit of fish, wildlife, and people

Objective: Water Quality Monitoring: Utilize trained citizen volunteers to collect water quality data from Pierce County streams and lakes for public education and to inform management decisions

Objective: Riparian Restoration/Habitat Enhancement: Utilize volunteers to enhance or restore native habitat through the eradication of invasive weeds and the installation of native plants

Objective: Education and Outreach: Promote public education about water quality, salmon habitat, non-point source pollution, and other natural resource concerns through partnerships, public participation, and outreach opportunities

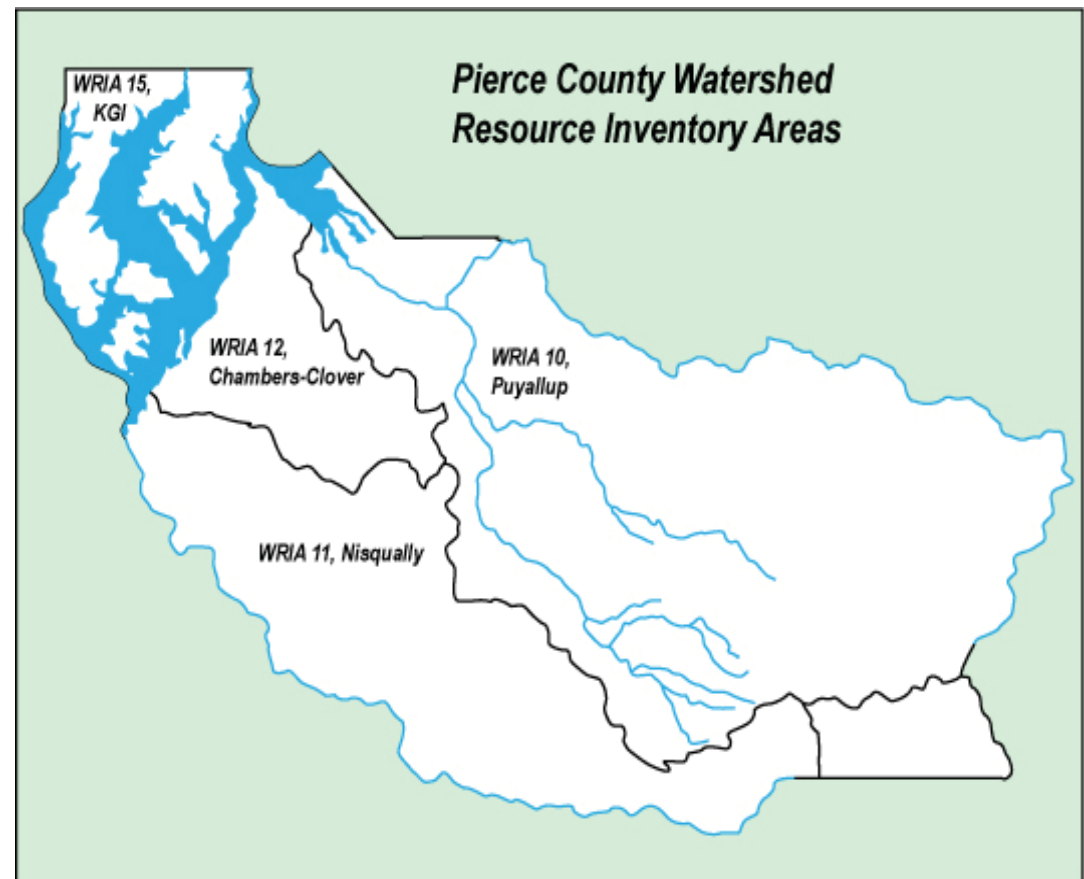
The mission of the Pierce Conservation District is to protect the natural resources and promote sustainable agriculture of Pierce County by empowering local individuals and communities.

P.O. Box 1057
Puyallup, WA 98371
253-845-9770
www.piercecountycd.org

Board of Supervisors:

Ernie Bay, Chair
Anders Ibsen, Vice Chair
Dave Seabrook, Auditor
Jeanette Dorner, Member

Monty Mahan, Director
253.845.9787
montym@piercecountycd.org



Pierce Conservation District FY2011 Annual Work Plan

Program Area: Farm Program

Goals: Assist property owners with the protection of water quality, improvement of fish and wildlife habitat, and natural resource conservation while sustaining our vital agricultural community

<i>Activities for FY 2011</i>	<i>Position Responsible</i>	<i>Anticipated Funding Source</i>
Provide at least ten (10) education and outreach opportunities for livestock farmers to highlight best management practices that improve production and reduce harmful natural resource impacts	Farm Program Staff	89.08 Assessment WSCC and other Grants
Work cooperatively with at least fifty (50) new small acreage farmers (especially in high priority areas) to implement recommended practices that help protect critical areas, soil and water	Farm Program Staff	89.08 Assessment WSCC and other Grants
Support and facilitate at least thirty (30) nutrient management program opportunities that redistribute or remove excessive nutrient concentrations	Farm Program Staff	89.08 Assessment WSCC and other Grants
Continue to explore and promote local programs that utilize or recycle common agricultural waste products	Farm Program Staff	89.08 Assessment WSCC and other Grants
Expand efforts to reach a broader Pierce County audience which can benefit from District livestock programs	Farm Program Staff	89.08 Assessment WSCC and other Grants
Respond to PCSWM IDDE complaints for water quality impacts and respond according to PCD referral procedures	Farm Program Staff	89.08 Assessment WSCC and other Grants
Respond to PCSWM NPDES program action items	Farm Program Staff	89.08 Assessment
Explore opportunities to support a strong education and outreach program that brings attention to non-point sources of pollution that negatively affect water quality and shellfish	Farm Program Staff	89.08 Assessment WSCC and other Grants
Provide technical assistance to community organizations that focus upon marine and fresh water quality within or around shellfish protection areas	Farm Program Staff	89.08 Assessment WSCC and other Grants
Promote shoreline management practices that reduce polluted runoff and increase natural wildlife habitat	Farm Program Staff	89.08 Assessment WSCC and other Grants

Pierce Conservation District FY2011 Annual Work Plan

Program Area: Farm Program

Goals: Assist property owners with the protection of water quality, improvement of fish and wildlife habitat, and natural resource conservation while sustaining our vital agricultural community

<i>Activities for FY 2011</i>	<i>Position Responsible</i>	<i>Anticipated Funding Source</i>
Assist local organizations and agencies in identifying and prioritizing open space opportunities that benefit Pierce County farms and natural resources	Staff	89.08 Assessment WSCC and other Grants
Assist in development of farm sustainability tools through purchases of agricultural equipment and other market infrastructure	Farm Program Staff	89.08 Assessment WSCC and other Grants
Increase local demand and opportunity for locally produced agricultural products by leading an active marketing/outreach campaign	Farm Program Staff	89.08 Assessment WSCC and other Grants
Support development of new markets for farm products	Farm Program Staff	89.08 Assessment WSCC and other Grants
Support focused education and outreach events to farmers and consumers	Farm Program Staff	89.08 Assessment WSCC and other Grants
Promote agricultural systems that connect local communities to local farming, food production, and the environment	Farm Program Staff	89.08 Assessment WSCC and other Grants
Support and provide direction to agricultural and food system oriented boards and organizations	Ag Development Staff	89.08 Assessment WSCC and other Grants

Pierce Conservation District FY2011 Annual Work Plan

Program Area: Stream Team

Goals: Involve and educate our local community through hands-on volunteer activities to improve the quality of streams in Pierce County for the benefit of fish, wildlife and people

<i>Activities for FY 2011</i>	<i>Position Responsible</i>	<i>Anticipated Funding Source</i>
Educate the community on the importance of water quality by holding a minimum of two (2) stream monitoring workshops, and training at least twenty (20) new volunteers	Stream Team Staff	89.08 Assessment WSCC and other Grants
Coordinate and maintain a lake monitoring program by providing on-going technical support and a year-end report to the city of Lakewood, and train new volunteers upon request	Stream Team Staff	89.08 Assessment WSCC and other Grants
Manage water quality data in a way that is easily retrievable upon request, and post data to the Naturemapping website	Stream Team Staff	89.08 Assessment WSCC and other Grants
Conduct a minimum of four (4) macroinvertebrate surveys on stream locations provided by Pierce County Surface Water Management	Stream Team Staff	89.08 Assessment WSCC and other Grants
Download water temperature data from South Prairie Creek and three tributaries on a quarterly basis in cooperation with Department of Ecology	Stream Team Staff	89.08 Assessment WSCC and other Grants
Conduct monthly monitoring of a minimum of ten (10) wells for the Clover-Chambers Watershed Groundwater Monitoring project	Stream Team Staff	89.08 Assessment WSCC and other Grants
Lead or partner on a minimum of four (4) riparian/habitat projects to help educate the public about the importance of native plants to local water quality, wildlife, and ecology	Stream Team Staff	89.08 Assessment WSCC and other Grants
Work to develop a system or set of criteria that will provide a framework within which the amount of cost share assistance that can be provided to a private or public landowner can be determined	Stream Team Staff	89.08 Assessment WSCC and other Grants

Pierce Conservation District FY2011 Annual Work Plan

Program Area: Stream Team

Goals: Involve and educate our local community through hands-on volunteer activities to improve the quality of streams in Pierce County for the benefit of fish, wildlife and people

<i>Activities for FY 2011</i>	<i>Position Responsible</i>	<i>Anticipated Funding Source</i>
Work with partner organizations to promote rain gardens and provide outreach, co-host workshops, assist with event coordination, and provide volunteer coordination	Stream Team Staff	89.08 Assessment WSCC and other Grants
Conduct or assist partner organizations with at least seven (7) education events (such as classroom or field events) on topics including non-point source pollution, water quality, salmon habitat, native plants and riparian habitat, or other areas of staff expertise	Stream Team Staff	89.08 Assessment WSCC and other Grants
Provide technical assistance to private or public landowners to implement best management practices related to non-point source pollution, riparian habitat, and other areas of staff expertise	Stream Team Staff	89.08 Assessment WSCC and other Grants
Support partner jurisdictions to meet their NPDES permit obligations by leading or assisting with educational or hands-on activities	Stream Team Staff	89.08 Assessment WSCC and other Grants
Oversee inventory and monitoring of roadside stream signs	Stream Team Staff	89.08 Assessment WSCC and other Grants

Pierce Conservation District FY2011 Annual Work Plan

Program Area: Green Partnership Fund

Goals: Promote broad-based efforts by partner organizations to achieve District mission through funding arrangements coordinated by the Greater Tacoma Community Foundation

<i>Activities for FY 2011</i>	<i>Position Responsible</i>	<i>Anticipated Funding Source</i>
Assist GTCF in the development and maintenance of a grant solicitation and ranking system that is visible and accountable to the public	Stream Team Staff	89.08 Assessment
Fund projects through like-minded non-profits, assessment jurisdictions, community and citizen organizations and associations, and interested individuals to bring about effective resource conservation	Stream Team Staff	89.08 Assessment
Ensure project eligibility includes all goals in the District plan	Stream Team Staff	89.08 Assessment

Program Area: Tahoma View

Goals: Inform the community about District programs and events to encourage and empower landowner actions to protect and conserve renewable natural resources

<i>Activities for FY 2011</i>	<i>Position Responsible</i>	<i>Anticipated Funding Source</i>
Edit and produce high quality newsletter and distribute to the local conservation community	Staff	89.08 Assessment WSCC and other Grants
Maintain high quality informational and motivational website describing District and Stream Team and their missions and activities	Staff	89.08 Assessment WSCC and other Grants

Pierce Conservation District FY2011 Annual Work Plan

Program Area: District Administration

Goals: Provide administrative support which enhances the effectiveness of the District Board of Supervisors and programs, while maintaining compliance with all applicable statutes, guidelines and official Board of Supervisor directives

<i>Activities for FY 2011</i>	<i>Position Responsible</i>	<i>Anticipated Funding Source</i>
Maintain transparent and accountable District Finances	District Auditor Management Team	89.08 Assessment WSCC and other Grants
Maintain appropriate, legal and ethical policies of conduct for Board of Supervisors and staff	Board of Supervisors Management Team	89.08 Assessment WSCC and other Grants
Ensure timely and accurate reporting of all aspects of District performance to the Board of Supervisors, and other interested parties and stakeholders	Management Team	89.08 Assessment WSCC and other Grants
Conduct District Board elections in the most fair, representative and cost effective manner possible within statutory guidelines	Management Team	89.08 Assessment WSCC and other Grants
Maintain excellent working relationships with key local and state government officials	Board of Supervisors Management Team	89.08 Assessment WSCC and other Grants
Ensure constitutionality and legality District actions and funding sources through judicial and legislative means	Board of Supervisors Management Team	89.08 Assessment WSCC and other Grants
Supply timely information and press releases to interested media channels	Board Chair Executive Director	89.08 Assessment WSCC and other Grants
Maintain land and improvements in a safe, legal, and environmentally responsible manner	Management Team	89.08 Assessment WSCC and other Grants
Manage working lands and buildings leases to local agribusinesses	Management Team	89.08 Assessment WSCC and other Grants
Maintain inventory of all District owned equipment	Management Team	89.08 Assessment WSCC and other Grants