



## Events & Opportunities



### We Are Hiring!

Pierce Conservation District is currently hiring!

**Contracts & Finance Administrative Assistant-** supports the District's financial operations, contract management, and organizational compliance.

**Shorelines Senior Program Manager-** implements PCD's Shore Friendly program, including field work, landowner engagement, technical assistance site visits, nearshore restoration project development and management.

[Apply](#)



### Monthly Board of Supervisors Meeting

September 10th from 5:00 PM - 8:00 PM

*In Person at PCD Office and Virtual*

Open to the public. Our monthly Board of Supervisors meeting to update work accomplished and future plans.

[Calendar Event](#)

[Agenda](#)



### Movement Workshop and Training

6:00 PM - 8:00 PM and 2:00 PM - 4:00 PM

September 10 & 14  
Online

Movement health + wellness from an athletic perspective for those whose livelihoods rely on their body. Discussion of how athleticism fits into physical labor and what movement self-advocacy is. Topics covered include:

- overall health related to athlete well-being
- learn tips on managing food, fluid, sleep, and stress
- high use movement patterns: hinge, squat, and carries
- ways to reduce occurrence of low back pain and injury

[Register](#)



### Fall Gardening Classes

Morning and Afternoon

September 20 and 22

Farm at Franklin Pierce and WSU Extension in Puyallup

Fall is just around the corner and now is the time to begin preparing your garden for it. We are providing two free classes in the month of September covering the topics of Seed Saving and Putting your Garden to Bed. Full-circle gardening begins with thinking of next season, what are you growing now that you want to save seed from? The class will cover a variety of seed saving techniques to cover most of what is in your garden!

[More Information](#)



### Livestock Rotational and Strip Grazing Workshop Taller de rotación de ganado y pastoreo en franjas

6:00 PM - 8:00 PM

September 23  
Eatonville

Just as reducing the size of paddocks improves the uniformity of pasture plant use, a manager can make livestock eat as much of the forage as desired by very carefully rotating the forage by using strip grazing. Strip grazing is useful to help prevent bloat (and founder) in pastures containing a high proportion of legumes (clover) because it forces animals to eat both the leaves and stems. Come to this workshop to learn about strip grazing and how it and other forms of rotational grazing can help you produce and your livestock utilize more forage.

---

Así como reducir el tamaño de los potreros mejora la uniformidad en el uso de las plantas de pasto, un ganadero puede lograr que el ganado consuma la cantidad de forraje que desee rotando cuidadosamente el forraje mediante el pastoreo en franjas. El pastoreo en franjas es útil para prevenir la hinchazón (y la laminitis) en pasturas con una alta proporción de leguminosas (trébol), ya que obliga a los animales a consumir tanto las hojas como los tallos. Ven a este taller para aprender sobre el pastoreo en franjas y cómo éste y otras formas de pastoreo rotacional pueden ayudarle a producir y a su ganado a utilizar más forraje.

[Register Here](#)

[Regístrate Aquí](#)





## Save the Date! Orca Recovery Day

**October 18**  
**Various sites through the County**

Save the date for this regional day of action. Orca Recovery Day is an intentional day of action to build awareness and make a difference for Puget Sound's local orca pod, the Southern Residents. This year, Pierce Conservation District will have several sites throughout the county where you can participate in habitat restoration efforts that improve salmon habitat. We can't wait to see you there!

[More Information](#)

## Volunteer Opportunities



### Summer Gleaning

**Variable Days**

**Various Locations Through the County**

Grab your boots and join us at Pierce County farms, because it's gleaning time! Hands-on experience harvesting on local farms. You can take home a portion, and the rest is donated to hunger relief organizations.

[Sign Up](#)



### Bradley Lake Work Party

**Saturday, September 6th, 9AM - 12PM**

**Puyallup**

Volunteer with us by spending 3 hours working at Bradley Lake Park in Puyallup. Activities include caring for existing plants, removing weeds, and mulching.

[Sign Up](#)



### Wapato Hills Work Party

**Saturday, September 13th, 9AM - 12PM**

**Tacoma**

Volunteer with us by spending 3 hours working at Wapato Hills in Tacoma. Activities include caring for existing plants, removing weeds, and mulching.

[Sign Up](#)



### q'w'iq'w'elut (Little Salt Marsh) Work Party

**Saturday, September 13th, 9AM - 12PM**

**Tacoma**

Volunteer with us by spending 3 hours working at q'w'iq'w'elut (little salt marsh) in Tacoma. Activities include caring for existing plants, removing weeds, and mulching.

[Sign Up](#)



### Waughop Lake Work Party

**Saturday, September 13th, 9AM - 12PM**

**Lakewood**

Volunteer with us by spending 3 hours working at Waughop Lake in Lakewood. Activities include caring for existing plants, removing weeds, and mulching.

[Sign Up](#)



### Adriana Hess Work Party

**Saturday, September 13th, 10AM - 12PM**

**University Place**

Volunteer with us by spending 2 hours working at Adriana Hess Wetland Park in University Place. Activities include caring for existing plants, removing weeds, and mulching.

[Sign Up](#)



### Peck Work Party

**Saturday, September 20th, 9AM - 12PM**

**Puyallup**

Volunteer with us by spending 3 hours working at the Peck Property in Puyallup. Activities include caring for existing plants, removing weeds, and mulching.

[Sign Up](#)



### Trafton Slope Work Party

**Saturday, September 20th, 9AM - 12PM**

**Tacoma**

Volunteer with us by spending 3 hours working at Trafton Slope Open Space in Tacoma. Activities include caring for existing plants, removing weeds, and mulching.

[Sign Up](#)

### South Prairie Creek Preserve Work Party

**Saturday, September 27th, 9AM - 12PM**

**Orting**





Come join the Pierce Conservation District as we remove invasive plant species! We will focus on removing spotted jewelweed to enhance habitat for our local salmonids.

[Sign Up](#)



## Nelson Nature Park Work Party

**Saturday, September 27th, 9AM - 12PM  
Edgewood**

Volunteer with us by spending 3 hours working at Nelson Nature Park in Edgewood. Activities include caring for existing plants, removing weeds, and mulching.

[Sign Up](#)



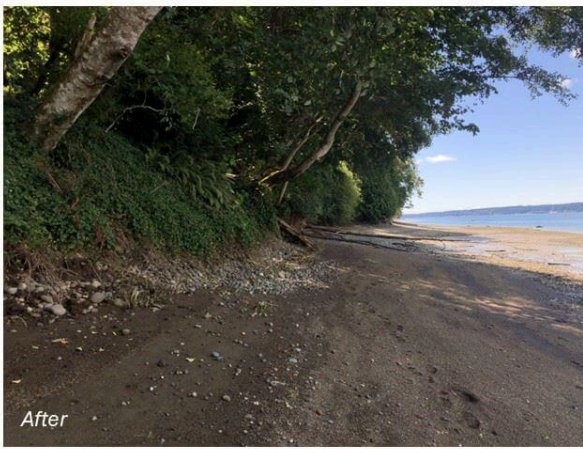
## Fern Hill Work Party

**Saturday, September 27th, 9AM - 12PM  
Tacoma**

Volunteer with us by spending 3 hours working at Fern Hill Open Space in Tacoma. Activities include caring for existing plants, removing weeds, and mulching.

[Sign Up](#)

## News from Pierce CD

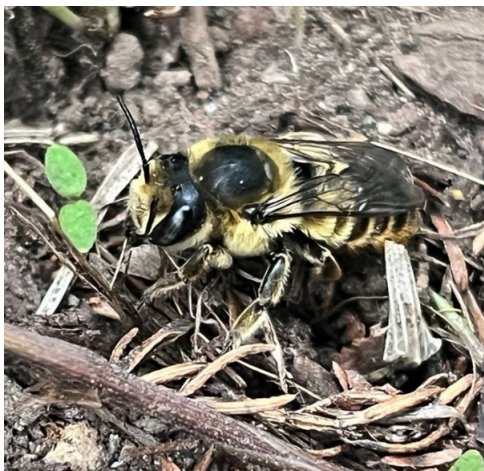


*The natural shoreline and beach after a wall removal.*

### A Shore Friendly Success Story: 750 feet of Shoreline Armor removed from Henderson Bay

It is time to celebrate the removal of 750 feet of shoreline armor from the shore of Puget Sound! Pierce Conservation District (PCD) completed the Henderson Bay Shoreline Restoration project in August 2025, the culmination of years of planning and ...

[Read More](#)



### Get to Know Your Pollinators: Leaf Cutter Bees

Have you ever seen a leaf that looks like swiss cheese? Likely a leaf cutter bee has stopped by- but not for a snack! Leaf cutter bees (*Megachile periherta*) are a Pacific Northwest ...

[Read More](#)

## In the Conservation Community

Pierce Conservation District hosts a [Green Events Calendar](#) where we display Green Events in the county near you!

[Tacoma Nature Center Fall Native Plant Sale](#) - Landscape your yard with plants that are native to our area. Planting natives ensures the conservation of our precious water resources and provides habitat for local birds, mammals and insects.

[Fruit Tree Pruning Workshop](#) - Pruning is an important step in the tree care process and it is important to take care of the trees that take such good care of us. Join Tacoma Tree Foundation at the UW-T Giving Garden for this lunch and learn workshop where you will learn pruning methods to help your fruit trees live a long and healthy life.

[Parks Tacoma Community Resource Fair](#) - Join PCD and Connect with a variety of community resources all in one place! Discover opportunities for food, housing, healthcare, and more in Tacoma and surrounding areas.

[Key Peninsula Farm Tour](#) - Support local farmers through Key Peninsula's 2025 farm tour.



Instagram



Facebook